

sāanvi
nirman

SOLACE

2 & 3 BHK PERFECT HOMES



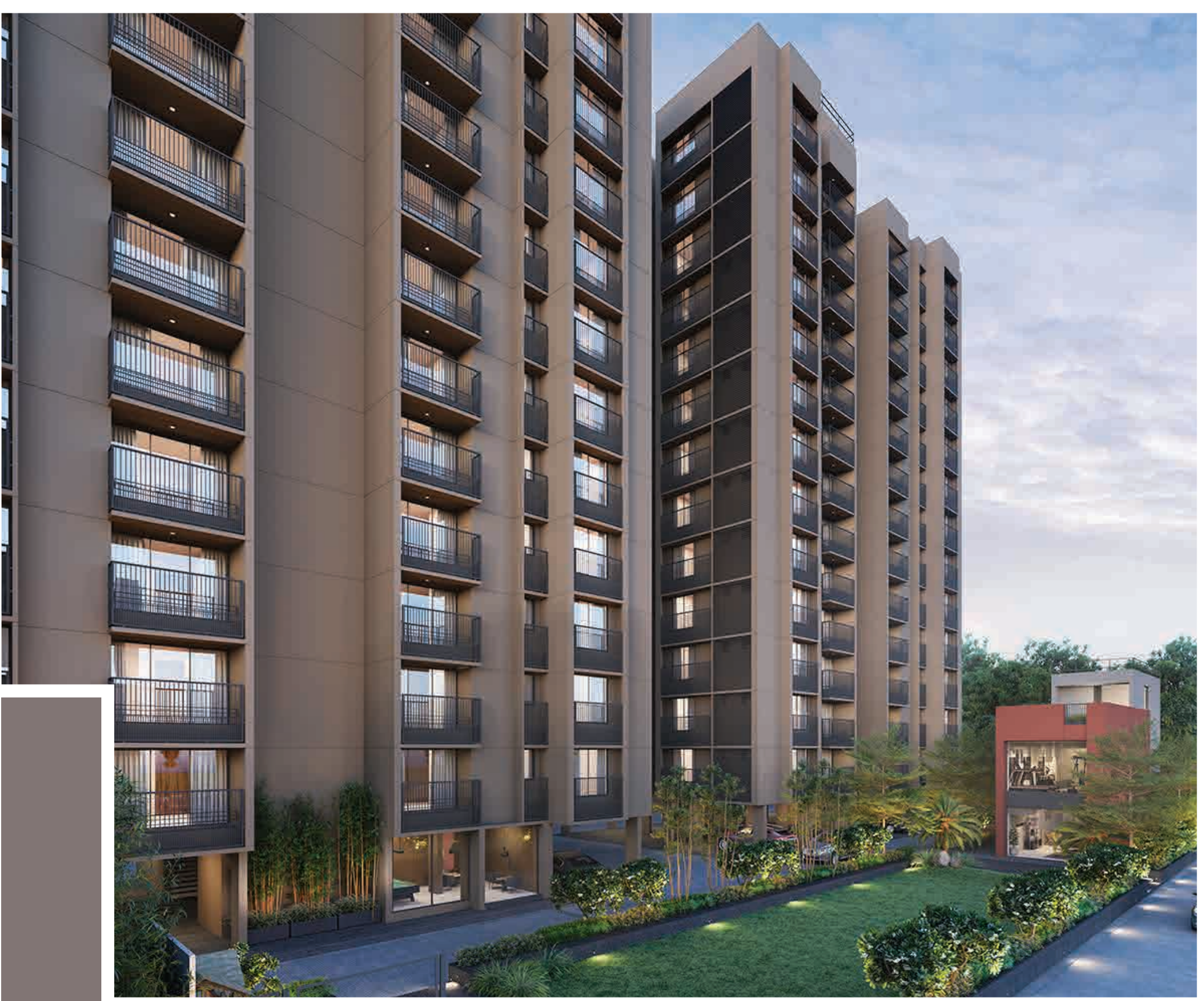
2 & 3 BHK PERFECT HOMES

sāanvi
nirman **SOLACE**

First Floor Plan



2 & 3 BHK PERFECT HOMES



2 & 3 BHK PERFECT HOMES

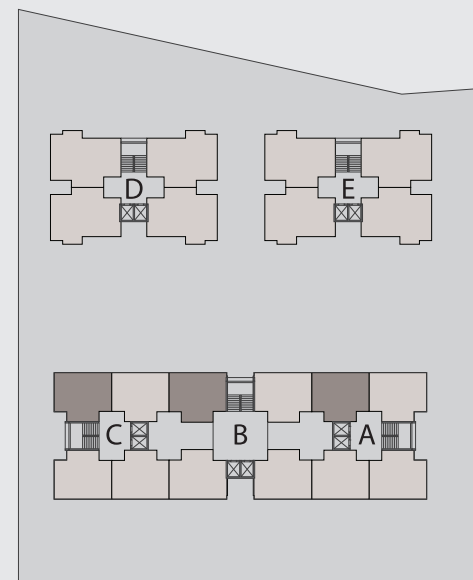
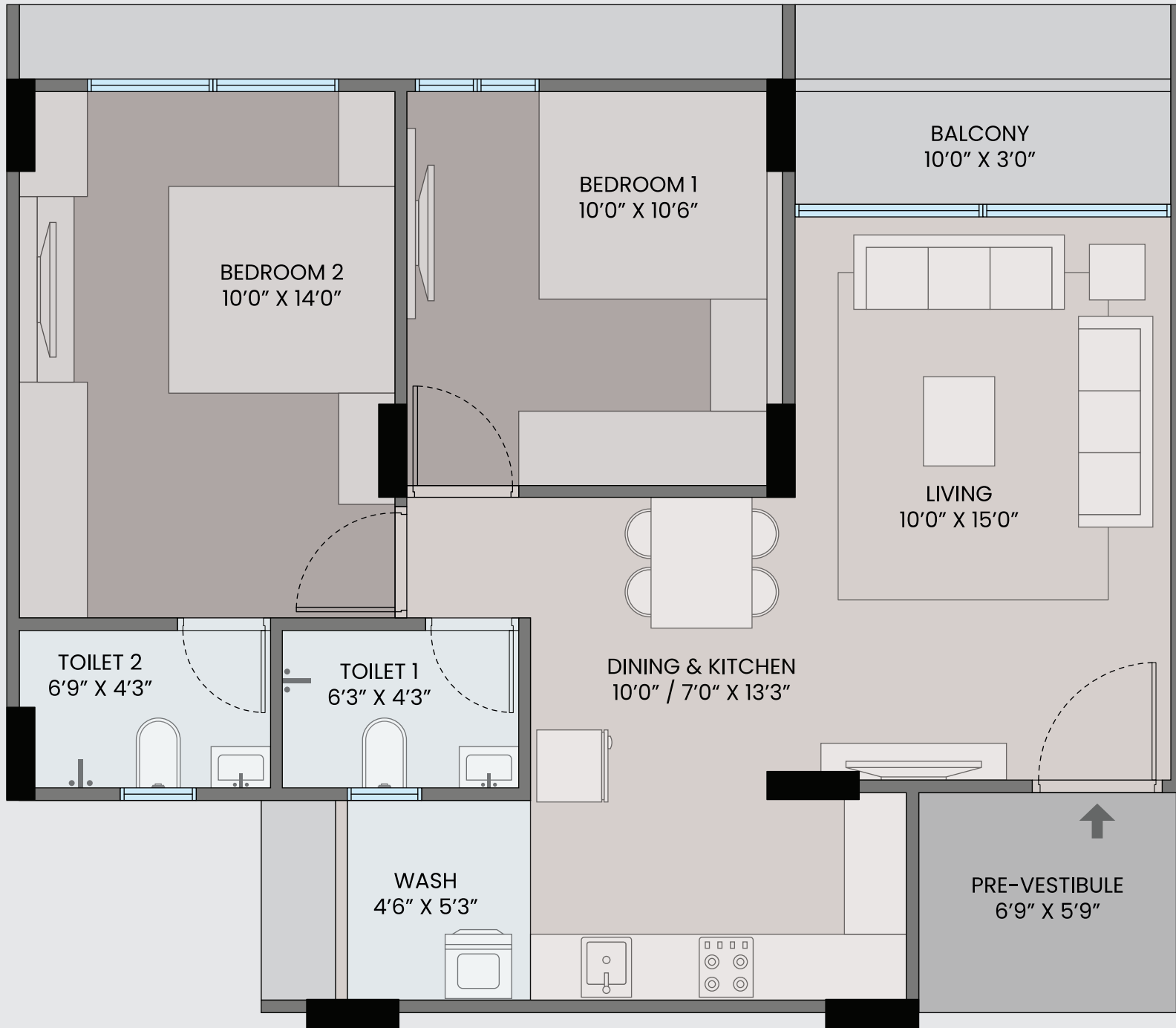
sāanvi
nirman **SOLACE**

Typical Floor Plan



2BHK

Typical Unit Plans



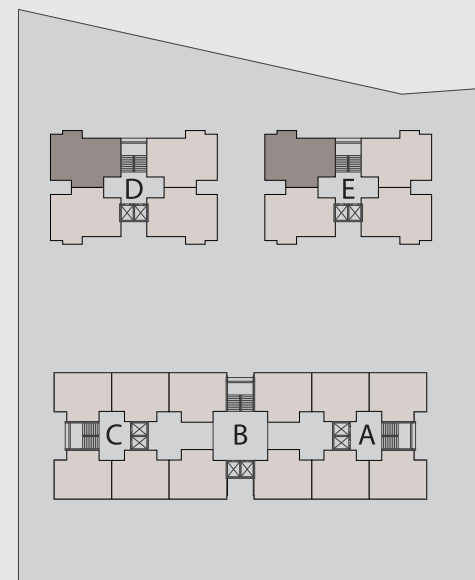
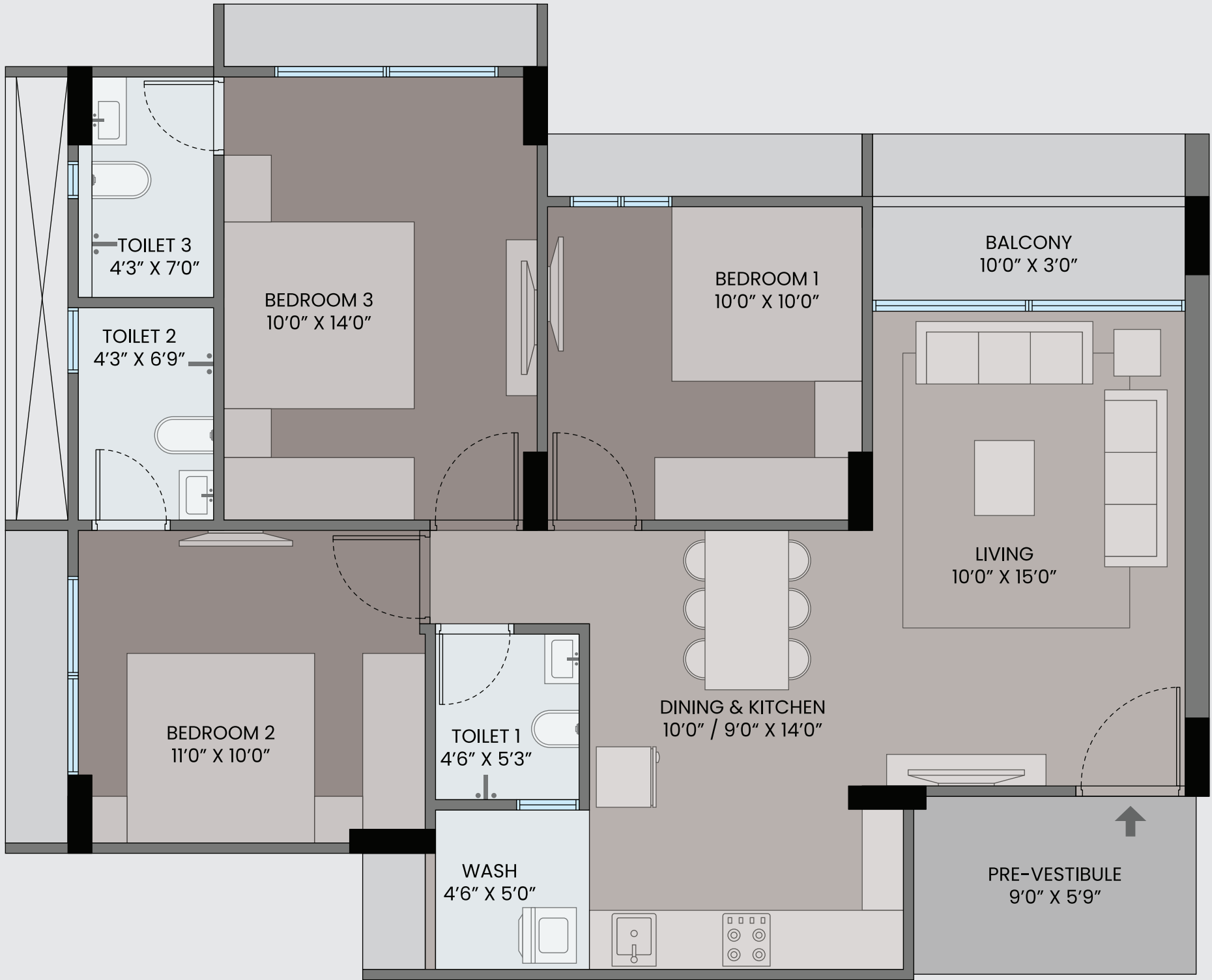
PARTICULARS	SQ. MT.	SQ. FT.
RERA CARPET	54.90	591
BALCONY AREA	2.77	30
WASH AREA	2.44	26
TOTAL RERA AREA	60.11	647





3BHK

Typical Unit Plans



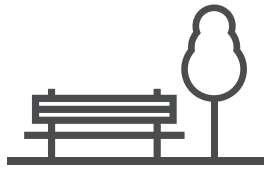
PARTICULARS	SQ. MT.	SQ. FT.
RERA CARPET	69.64	750
BALCONY AREA	2.71	29
WASH AREA	2.10	23
TOTAL RERA AREA	74.45	802



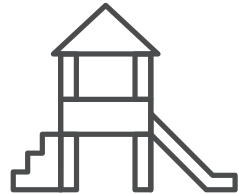




AMENITIES



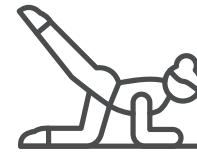
Sit-Out Plaza



Kid's Play Area



Senior citizen
Sit-Out



Yoga
Deck



Party Lawn



Indoor
Games



Well Equipped
Gymnasium



Club
House



Toddler's
Zone



Projector
with Screen

SALIENT FEATURES

- Well designed entrance foyer
- Common area under CCTV surveillance
- Fire hydrant system in every block
- Provision for satellite connection
- All internal roads of RCC / pattern designed stone paving
- Well planted complex with landscape garden
- Garbage chute in every block
- Earmarked space for AC outdoor units
- Power backup for common utilities
- Provision for car parking
- Ambient sound system in garden and amenities area

SPECIFICATIONS

Flooring:

- Vitrified flooring in living, dining, kitchen and all bedrooms
- Anti-skid tiles in balcony
- Polished natural granite platform with S.S. sink in kitchen
- Glazed tiles dado up to lintel level on wall above kitchen platform
- Vitrified tiles in wash area

Doors:

- Veneer finish main door with wooden/WPC frame and night latch lock
- All internal doors solid particle board (SPB)/ flush door with WPC frame

Wall Finish:

- Internal smooth finished mala plaster with putty
- Exterior double coated plaster / rustic texture & acrylic paint over it

Windows:

- Aluminium sliding windows

Elevator:

- 2 Premium quality elevators in every block. One stretcher size & one passenger elevator.

Electrification:

- Single phase concealed ISI copper wiring with modular switches
- Adequate points for AC in living and bedrooms, geyser point in bathroom, TV point in living room

Bathrooms:

- Ceramic tile floor and dado up to lintel level in bathrooms
- Good quality sanitary ware
- Flush valve / Flush tank
- Good quality CP fittings
- Good quality corrosion free & leak proof CPVC/UPVC pipe fitting



NEARBY DESTINATIONS

Jain Temple	1.2 kms	DPS Bopal	4.7 kms
SP Ring Road	1.4 kms	Sindhu Bhavan Road	5 kms
SOBO Centre	1.5 kms	Karnavati Club	5.5 kms
Apollo International School	1.7 Kms	Iscon Cross Road	5.6 kms
Club O7	3.2 kms	Kalupur Railway Station	16.5 kms
Krishna Shalby Hospital	3.6 kms	Airport	23.5 kms



TAP HERE
FOR LOCATION

Follow us on



SITE ADDRESS

Saanvi Nirman Solace, B/s. Safal Parisar 1,
Next to Gala Gardenia, South Bopal, Ahmedabad, Gujarat - 380058

FOR BOOKING/ ENQUIRY

☎ 823 895 4545 ✉ enquiry@saanvinirman.com

RERA NO: PR/GJ/AHMEDABAD/AHMEDABAD CITY/AUDA/MAA12635/161123

For more details visit www.gujrera.gujarat.gov.in.

Disclaimer: Artistic impressions are indicative only, which might not reflect the exact finishing of the building and the interiors. All distances mentioned are crow fly distances. Plans / Facilities / Images / Layouts / Specifications and other details contained herein are only indicative and subject to change without prior notice as may be required by the concerned authorities / developers / owners or as required due to site requirements. This project is residential as well as commercial. This printed material does not constitute an offer and / or contract of any type between the developer / owner and the recipient. For further information regarding the project the member / customer is requested to check the details on RERA website or at the Developer's office before going ahead with the booking. Subject to Ahmedabad Jurisdiction.